



# Untangling the Web: Mapping Family & Business Dynamics

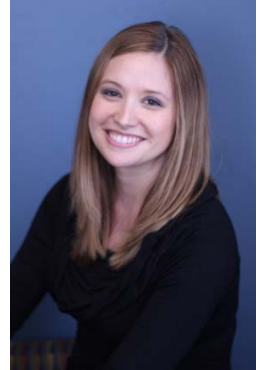
Presented by: Nicole Smith & Ken Utech  
UTECH Customized Organizational Development



**Wednesday, January 18, 2017**

7:30am Registration/Networking  
8:00am – 10:00am Program

UW Oshkosh Appleton Executive Education Center  
2323 E. Capital Drive, Appleton, WI



A key measurement in any business is how effectively people interact with one another. When family is involved, these interactions are emphasized even more, especially as disconnects arise. This interactive session will help bring clarity to the relational tension that can exist in your business and family. Participants will learn a process to map out how people interact within the organization and family. Mapping relational tension begins normalizing interpersonal issues as well as highlighting areas to engage that can lead to greater productivity, efficiency and overall health as an organization and family.

Registration is required: [http://wfbf.uwosh.edu/Assets/programs\\_registration.php](http://wfbf.uwosh.edu/Assets/programs_registration.php)

For more information, contact Nancy Jo Dietzen, WFBF [wfbf@uwosh.edu](mailto:wfbf@uwosh.edu) or 920-424-1541

**Wisconsin Family Business Forum Sponsors:**

